



UNIVERSITY OF
LEICESTER



Leicester Institute for Advanced Studies

Associate Fellows Handbook

Bringing together researchers from across all disciplines to deliver ambitious, transformative and impactful research.



UNIVERSITY OF
LEICESTER

Leicester Institute for Advanced Studies

Bringing together researchers from across all disciplines to deliver ambitious, transformative and impactful research

Associate Fellows Directory

Are you looking for new interdisciplinary partners or collaborators?

Associate Fellowships are offered to researchers who have demonstrated active research across disciplines at Leicester, or have made a demonstrable contribution to interdisciplinary studies more broadly. The Associated Fellowships programme aims to consolidate and further develop interdisciplinary collaborations, including on issues relevant to broader society. These Fellowships are intended to create partnerships between LIAS and University of Leicester colleagues with shared aims and interests.

The following handbook has been designed to highlight the work of our Associate Fellows and will be updated regularly to encourage new interdisciplinary relationships. To hear more about the associate fellows and their current research interests you can visit our website (see the Spotlight Series). For more information about our Visiting Fellowship and Pump Priming Schemes please contact us directly at lias@leicester.ac.uk.

You can also follow us on [X](#) and [Instagram](#) or visit our [Figshare collection](#).



UNIVERSITY OF
LEICESTER

Associate Fellow Profile



Name:

Professor Heiko Balzter | [Get in touch with Heiko](#)

Heiko is the Director of the Institute for Environmental Futures, which is undertaking transdisciplinary research to tackle the planetary crisis. He is also chair of the UKRI Strategic Programme Coordination Team for “Landscape Decisions” (a £10.5 million programme). The programme is ending in 2024 and has worked towards a holistic framework for landscape decision-making in the UK together with policy-makers and stakeholders. As a member of the National Centre for Earth Observation, he is working on forest biomass and carbon mapping worldwide. His team has also pioneered how near-real-time forest alerts from space can strengthen forest governance in Kenya. He has a background in Agricultural and Environmental Sciences and during his time at Justus-Liebig-University in Giessen, Germany, he worked as a Remote Sensing Specialist and Head of Section for Earth Observation at the Centre for Ecology and Hydrology, and is now a Professor of Physical Geography.

Research Interests:

Heiko’s research interests focus on Earth Observation applications to understand climate change and land use impacts on the land surface and the ecosystem services it provides. An increasing focus of his work is developing digital solutions to accelerate the pathway to a Net Zero future. This includes the development of self-learning digital twins for sustainable land management. He has extensive expertise in Earth observation and remote sensing of forests, land cover and lakes. His forest research includes estimating forest aboveground biomass from space, satellite-enabled forest alerts for logging detection in near-real-time, fire monitoring, and mapping tree disease outbreaks. Interdisciplinary working has long fascinated and enthused him.



Associate Fellow Profile



Name:

Dr Chiara Batini | [Get in touch with Chiara](#)

Chiara is a Senior Research Fellow in the Department of Population Health Sciences, as part of the Leicester Biomedical Research Centre, in the Data Innovation for Multiple Long-Term Health Conditions and Ethnic Health theme. With a background in evolutionary biology, she has dedicated the first part of her career to the study of human genetic diversity, with a special focus on sex-biased processes and the role of culture and climate in the history of Central Africa and Europe. In 2016 she joined the Genetic Epidemiology group at University of Leicester to contribute to the development of precision medicine approaches in the context of multi-ethnicity.

Research Interests:

Chiara's research focuses on human genetic diversity: how it can help understanding diseases and behaviours, and how it can contribute to unveil our history. Smoking and drinking behaviours have been the centre of her recent UKRI Innovation Fellowship at HDR UKr. Beyond this, she contributes to the sample and data management for the Extended Cohort for E-health, Environment and DNA (EXCEED), as well as to large-scale genetic studies of respiratory health and many other traits. She has a passion for training and mentoring junior colleagues. Chiara has organised and delivered training in bioinformatics for over ten years in the UK and abroad, and she has been involved in several projects aimed at capacity building in South Africa, spanning lung function and air quality.



UNIVERSITY OF
LEICESTER

Associate Fellow Profile



Name:

Dr Svenja Bethke | [Get in touch with Svenja](#)

Svenja is Associate Professor in Modern European History at the Stanley Burton Centre for Holocaust and Genocide Studies. She specialises in the history of modern Jewry, the Holocaust and migration in their transnational and global dimensions, drawing on multiple languages and interdisciplinary approaches. Her research spans across two major themes: First, everyday life and survival strategies under Nazi occupation and second, the history of dress and belonging in times of migration. She has led international and interdisciplinary projects funded by German funding bodies, the European Commission (Horizon 2020) and the AHRC.

Research Interests:

Modern Jewish history, migration history, dress history and visual culture. She currently holds an AHRC Research, Development and Engagement Fellowship for her project 'Between Diaspora and the 'Land of Israel': Jewish Dress, Migration and Belonging, 1880's-1948' that combines interdisciplinary research at the intersection of migration history, fashion studies and visual culture with engagement work with international partners from the heritage and museums sector.



Associate Fellow Profile



Name:

Dr Stef De Sabbata | [Get in touch with Stef](#)

Stef is Associate Professor of Geographical Information Science at the School of Geography Geology and the Environment and Research Theme Lead for Cultural Informatics at the Institute for Digital Culture of the University of Leicester. Her research focuses on geographic data science and the application of artificial intelligence to human geography and internet studies. She teaches data science, geographic artificial intelligence, information visualization and GIS. Stef is the Chair of the Geographic Information Science Research Group of the Royal Geographical Society with IBG.

Research Interests:

Stef is a geographic data scientist working at the intersection between human geography artificial intelligence and internet studies. In the past few years, she has focused her attention on developing new machine learning approaches to geographic information analysis - for instance applying deep neural networks to geodemographic classification and natural language processing to digital geographies. Studying internet platforms and their biases is one of her most long-standing research areas. Stef also aims to leverage artificial intelligence to understand the emerging meaning we attach to geographic places through the content generated on internet platforms. She collaborates with colleagues on topics that span through the wide range of research topics represented in the school from the geographies of everyday multicultural living in Leicester to the study of the Anthropocene and the University from digital politics to artificial intelligence.



Associate Fellow Profile



Name:

Dr Winifred Ekezie | [Get in touch with Winifred](#)

Winifred is a public health epidemiologist with experience developing, implementing, monitoring and evaluating primary healthcare services in different population settings, including maternal and child healthcare and humanitarian health services and research. She has expertise in health promotion intervention development, global systematic reviews, and public policy recommendations. She currently conducts research on the accessibility of essential health services in disaster settings, the availability of standard health service guidance, vaccine communication and health inequalities amongst ethnic minorities and seldom heard groups.

Winifred is an Honorary Research Fellow with the Diabetes Research Centre and works with the Centre for Ethnic Health Research at the University of Leicester. She is also a Lecturer in Public Health at Aston University, Birmingham.

Research Interests:

Disaster and humanitarian health issues, human displacement and migration, marginalised, vulnerable, seldom-heard and ethnic minority groups, community engagement and empowerment, sustainable health interventions, healthcare system and process, and population health risk analysis.



Associate Fellow Profile



Name:

Professor Sarah Gabbott | [Get in touch with Sarah](#)

Sarah is a palaeontologist working on the biology, ecology and evolution of ancient life through analyses of the fossil record and understanding of environmental and climate change through time. She also works on the more recent Anthropocene record of environmental and biological change especially in the City of Leicester and surrounds. She has worked extensively on plastic pollution, especially related to river systems and collaborates with social scientists to understand the drivers of littering, and with biologists on ecosystem damage caused by plastics. Sarah has also worked with Leicester City Council, Seven Trent Water (UK) and the Government of Malawi on plastic pollution in the environment and how to mitigate the problem.

Research Interests:

As a palaeobiologist Sarah focusses mostly on exceptionally preserved fossils, where remarkably the organic features of animals, which usually perish rapidly after death, have been transformed through a variety of processes to become geologically stable materials – faithfully recording long-extinct animal anatomy. From these fossils we can gain a much more detailed and comprehensive picture of ancient life, but first we must “read” them correctly. Sarah uses a variety of analytical techniques and novel laboratory decay experiments to understand the transformation of animal remains during fossilization. But also, to extract useful information from fossils we must take a holistic approach and understand not only how they formed, but where the animals lived and where the fossilization process occurred. To do this she undertakes detailed investigation of the sediments in which fossils is found including looking at details of texture and chemistry to unravel the depositional process and environment.



Associate Fellow Profile



Name:

Dr David Guttery | [Get in touch with David](#)

David is a lecturer in Cancer Early Detection in the Leicester Cancer Research Centre (LCRC), whose research focuses on translational studies using artificial intelligence and liquid biopsy for the detection and monitoring of cancer. He is also the postgraduate tutor for the LCRC and first year GGB students responsible for recruitment, development and well-being of all PhD students who are trained in the department. David's research also focuses on the cell biology of the malaria parasite Plasmodium, particularly during the mosquito stages of its life-cycle and how reversible protein phosphorylation plays a key role during these stages.

Research Interests:

David's research is focused on the utility of circulating tumour DNA, combined with artificial intelligence (AI), towards earlier detection and monitoring of cancer. Over the past ten years, he has worked on earlier detection of acquired resistance to hormone therapies in metastatic breast cancer, as part of Professor Jacqui Shaw's CRUK-funded programme. This has now expanded into using ctDNA for monitoring endometrial cancer relapse, as part of a wider gynaecological research group led by Dr Esther Moss. David has recently developed a collaboration with Dr Harriet Walter and Dr Oladejo Olaleye, looking at improving PET/CT accuracy post-treatment, and predicting relapse through the combination of ctDNA analysis with AI. He is also collaborating with Professor Yudong Zhang of the School of Informatics that looks to improve medical imaging methods for cancer using machine-learning.



Associate Fellow Profile



Name:

Dr Clara Garavelli | [Get in touch with Clara](#)

Clara is Associate Professor in Latin American Studies at the University of Leicester (UK). She was born in Rosario (Argentina), and has worked and studied in London, Cambridge (UK), and Madrid (Spain). Her research interests include the connections between cinema and fine arts, Latin American film, video and Fine Arts, as well as the more experimental spheres of the moving image. She is the author of *Video Experimental Argentino Contemporáneo* (EDUNTREF 2014) and *Ricardo Darín and the Construction of Latin American Film Stardom* (Edinburgh University Press, 2023). She has extensive editing experience, including 'Gender, Sexuality, Film, and Media in Latin America' for the journal *Latin American Perspectives*. She has published in various national and international journals; curated several video projections and exhibitions in Argentina, Brazil and the UK; and acted as Jury member of the *International Festival of Video Art* (FIVA, Argentina, 2012 & 2013) and the video selection of the *VIII International Biennial of Contemporary Textile Art* (Madrid, Spain, 2019).

Research Interests:

Clara's research interests include: The connections between cinema and fine arts, Latin American film, video and fine arts, experimental film and video, stardom, Argentine art & literature, participatory and research-led art practice, and British Latinx.



Associate Fellow Profile



Name:

Professor Andrew Hugill | [Get in touch with Andrew](#)

Andrew is a composer, musicologist and creative technologist who works across disciplines. He was the Deputy Director of the [Institute for Digital Culture](#) at the University of Leicester. He also founded the Creative Computing programmes at Leicester and at Bath Spa University, where he worked from 2013-2018. Before that, he worked at De Montfort University for 27 years, first in the Performing Arts (Music) department, then founding the Music, Technology and Innovation department and finally directing the Institute of Creative Technologies from 2006-2013.

Andrew retired in 2024.

Research Interests:

Andrew's research covers music, computing, literature, and various aspects of disability. In music, his [compositions](#) have been performed worldwide and he has published numerous books, chapters and articles on musicology. His best known writings are the book [The Digital Musician](#) (now in its third edition) and the website [The Orchestra: A User's Manual](#) (which still receives roughly 15,000 unique visits per month, after two decades of existence). In other areas, his [book on 'Pataphysics](#) continues to be widely read and the [Aural Diversity](#) project is having a significant national and international impact.



UNIVERSITY OF
LEICESTER

Associate Fellow Profile



Name:

Dr Catherine John | [Get in touch with Catherine](#)

Catherine is a clinical academic in public health and epidemiology, with expertise in development of cohort studies and the use of longitudinal and linked healthcare data to understand the epidemiology and genetic epidemiology of chronic diseases. In her clinical role, she is a specialty registrar in public health, practising in local authority public health, with a particular interest in developing strategy and policy to address the social determinants of health, and community engagement and co-production. She believes strongly in the role of epidemiology and public health research in reducing health inequalities, and in the importance of effective research engagement with underserved communities to underpin this.

Research Interests:

Catherine's research spans public health and genetic epidemiology, including the design, development and management of cohort studies and the use of longitudinal and linked healthcare data in combination with genetic data. Her research primarily aims to better understand genetic and environmental risk factors for chronic disease, and to drive improvements in future therapeutic and preventive strategies. She has played a key role in development of two large cohort studies, as co-investigator and now scientific director for the EXCEED study (a cohort of over 11,000 adults focusing on chronic disease) and as a founding co-investigator of UK-REACH (a cohort of healthcare workers, focusing on COVID-19 risk and ethnicity).



UNIVERSITY OF
LEICESTER

Associate Fellow Profile



Name:

Dr Sarah Johnson | [Get in touch with Sarah](#)

Sarah is a Lecturer in Practice and Research Fellow in the School of Geography Geology and the Environment. She is a specialist in remote sensing and geospatial data focusing on the land environment. Having previously worked in the geospatial service industry for many years before joining the university, she has a strongly applied background, and focus on work that links human experiences and interactions with the natural environment such as flooding, agriculture, land use and health.

Sarah also works closely with PGT students and convenes a module helping develop students' skills for managing environmental projects in a challenging and complex world.

Research Interests:

Sarah's research is focused around the use of remotely sensed and geospatial data for applications related to the land environment. In particular, she is interested in: Generating appropriate, meaningful and well quantified datasets to support epidemiological studies linking environmental conditions and human health. Here, she is currently focusing on issues related to greenspace and greenspace descriptors. Building on this, she is also engaged in studies looking at the impact of indoor environments on patients and staff in hospitals, especially with respect to light levels and how this may influence health.



Associate Fellow Profile

Name: Dr Himanshu Kaul | [Get in touch with Himanshu](#)

I'm a Biomedical Engineer with >10 years' expertise in combining computational, clinical, and experimental approaches/data to gain systems-level understanding of biological phenomena. In 2021 I joined the University of Leicester as a Royal Academy of Engineering Research Fellow with cross-appointments in the School of Engineering and Department of Respiratory Sciences. My interdisciplinary scientific contributions include amendment of the definition of the dynamic reciprocity principle (J Theor Biol, 2015), a virtual asthma patient that predicted the impact of three different asthma drugs on two clinical outcomes (Sci Transl Med, 2019 and Eur Respir J, 2019), and the first computational framework capable of predicting how changes in gene regulatory network topology impact tissue patterns (Stem Cell Reports, 2023). I played a pivotal role in developing the measurement criteria to assess the success of integration of synthetic gene circuits in human pluripotent stem cells (Mol Syst Biol, 2022). I'm passionate about engaging with stakeholders to co-create new knowledge and solutions leading to societal impact. My team co-created with LOROS Hospice an inclusive, frictionless, digital survey tool LeicSurvey, which is currently being trialled several 15 organisations globally. My team is developing a data dashboard in collaboration with a FGM charity to enable visualisation of women/girls at risk of or impacted by FGM in the USA.

Research Interests:

Asthma, Agent-based modelling, Cell Biology, Computational Biology, Cancer, Data Science, Developmental Biology, Digital Twins, Disease Modelling, Embryogenesis, Heritage, Multiscale Biology, Organoids, Regenerative Medicine, Robotics, Stem Cells, Software Development, Team Resilience, Tissue Engineering



UNIVERSITY OF
LEICESTER

Associate Fellow Profile



Name:

Dr Genovefa Kefalidou | [Get in touch Genovefa](#)

Genovefa Kefalidou has a multidisciplinary background in Computer Science, Distributed Systems and Human Factors Engineering, Human-Computer Interaction and Psychology. She is currently a Lecturer in Human-Computer Interaction (HCI) within the School of Computing and Mathematical Sciences (CMS). Her research focuses on User Experience (UX) and User-centred Artificial Intelligence, Design and Evaluation of Cognitive Systems, Intelligent Service Design and Human-Data Interaction. Her research is applied in Transport and Healthcare and has a particular focus on designing novel intelligent personalised decision-support systems utilising Ambient Intelligence (AmI) and Mixed Reality (MR) technologies that explore novel 'human-in-the-loop' approaches for optimisation, enhanced UX and performance in AI-based systems and services. She is a Co-I and member of the Management Board of the Trustworthy Autonomous Systems (TAS) Verifiability Node (<https://verifiability.org/>) where she looks on how trust enhances the design and verifiability of Autonomous Systems (AS) and service acceptance.

Research Interests:

User-Centred Artificial Intelligence (UCAI), User-Centred Design and Evaluation, Cognitive Computing, and Human-Data Interaction and Data Visualisations. She is particularly interested in embedding 'human-in-the-loop' approaches in Autonomous Systems (AS), trust and verifiability in AS, interactive ML, metacognition in AI and Mixed Reality (MR).



Associate Fellow Profile



Name:

Dr Diane Levine | [Get in touch with Di](#)

Di is Assistant Professor/Lecturer in the School of Criminology at the University of Leicester, and a Visiting Research Associate (Centre for Social Development in Africa, University of Johannesburg).

Di began her career as a primary school teacher specialising in behavioural difficulties, and was then in civil service for over a decade before completing her PhD. As a result, she has - and continues to be - committed to social change through education and evidence-informed policy.

Research Interests:

Di's research is focused on understanding the ways in which children and adolescents survive and thrive when life is challenging, particularly in a digital world, and in relation to addressing child abuse/neglect/maltreatment and child protection. She takes a multisystemic approach to understanding childhood and adolescent resilience; in effect this means that resilience is not the responsibility solely of an individual or wholly an inherent character trait but resilience pathways arise and are travelled through the interplay of many systems all of which themselves require resilience enablers. Di align herself with the Africa(n)-aligned/Africa(n)-centred research movement as most of her research is located in and carried out with Africans (primarily South Africa and Kenya) who are vastly under-represented in most literatures on childhood and adolescence.



UNIVERSITY OF
LEICESTER

Associate Fellow Profile



Name:

Professor Nicola Mackintosh | [Get in touch with Nici](#)

Nici Mackintosh is a Professor in Social Science applied to Health. She has a background in critical care nursing, and is a graduate of King's College London. Her research uses sociological theory and qualitative (particularly ethnographic) methods to bring new understandings to patient safety, health services and improvement science research. Having both a clinical and academic background, working across academic departments and clinical specialities, maintaining strong links with clinical staff, and building relationships with policy makers, the arts and third sector has ensured her research has policy and practice impact, including through non-academic engagements. Her research has included the management of escalation of care in different settings, speaking up about healthcare quality and safety, the role of new digital technologies in shaping patient-provider roles, and how safety culture is enacted in practice.

Research Interests:

Patient safety cultures and response systems for escalation of care; affective atmospheres of safety in different hospital spaces; the role of digital technologies in shaping patient-provider roles; digitalisation and responsabilisation; patient roles around self-diagnosis and self-triage linked to self-care and patienthood.



Associate Fellow Profile



Name:

Professor John Maltby | [Get in touch with John](#)

John is a Professor in Differential Psychology. His research primarily revolves around the realms of psychological health and well-being, spanning life stages from infancy to old age. A significant focus has been dedicated to the development of assessment models, especially in the nexus of resilience, health, well-being, and care. This research deeply intertwines with broader societal themes like social inclusion, equity, and education. Recent endeavours in this field have emphasised the creation of assessment methods that aim not just for efficiency but also for depth and comprehensiveness. The objective is to craft instruments that capture human experiences in a more expansive and meaningful manner, rather than just on a surface level. Furthermore, a current focal point in resilience research is the application of ecological systems. This approach aims to streamline and simplify the understanding of resilience within human contexts.

Research Interests:

Enhancing Assessment Techniques in Psychological Health and Well-being: Collaborative efforts are underway to apply broader models of health and well-being to assessment. **Eudaimonic Well-being Throughout Life's Stages:** By joining forces with experts from fields such as gerontology, sociology, developmental psychology, and clinical and health sciences, there's potential to build holistic research programs focused on well-being across different life phases. **Education, Resilience, Adaptability, and Societal Challenges:** This theme explores the potential for collaborative ventures with educators, technologists, and crisis management specialists. **Individual Variation, Cultural Influences, and Behavior Modification:** Research here delves into the ways societal norms, literacy levels, and individual disparities shape behaviours and their potential for change.



Associate Fellow Profile



Name:

Dr Winfred Onyas | [Get in touch with Winfred](#)

Dr Winfred Onyas is an Associate Professor in Marketing at the University of Leicester School of Business. She leads the Consumption, Markets and Society Research Group at the School of Business. Dr Onyas' work focuses on building UK-Africa research and education partnerships and is at the interface of research, enterprise and policy. She recently led UK-Africa partnerships on the projects: "Bridging the digital gender divide to stimulate growth in African digital economies", funded by UK Research and Innovation, Global Challenges Research Fund (2020-21); and "Exploring the Nature and Prospects of Frugal Innovation in Uganda", funded by the British Academy International Partnership & Mobility Scheme (2016-19).

Research Interests:

Dr Onyas' research interests are in market studies, marketing and innovation in resource-constrained environments, with a particular focus on Africa. Her work investigates the agency of actors in such settings; to examine their role in enacting sustainable markets, brands, and market exchanges. Her research explores how actors can be equipped to navigate challenges such as illiteracy, access to resources, and institutional voids to enable their sustained participation in markets. Dr Onyas' work is published in Marketing Theory, Industrial Marketing Management, Journal of Marketing Management, International Marketing Review and Journal of Rural Studies.



Associate Fellow Profile



Name:

Dr Michelle O'Reilly | [Get in touch with Michelle](#)

Michelle is an Associate Professor of Communication in Mental Health at the University of Leicester, working across the School of Criminology and Sociology, and the School of Psychology and Vision Sciences. Michelle is also a Chartered Psychologist in Health and an Associate Fellow of the British Psychological Society. Michelle is a Research Consultant and Quality Improvement Advisor for Leicestershire Partnership NHS Trust where she provides mentoring and supervision for clinical staff. She is based in the Directorate of Families, Young People and Children, Learning Disabilities and Autism. Additionally, Michelle is an Associate Lecturer for the Open University in the division of Education.

Research Interests:

Michelle is an interdisciplinary researcher specialising in mental health and wellbeing, doing work in health, social care, and education. Michelle has research interests in mental health and social media, self-harm and suicidal behaviour, neurodevelopmental conditions, and child mental health services, such as mental health assessments and family therapy. Michelle recently won the Anselm Strauss Award for Qualitative Family Research for her co-authored contribution on discursive psychology in this area (with Nikki Kiyimba and Jessica Lester). Michelle has expertise in qualitative methodologies and specialises in discursive psychology and conversation analysis. Michelle also has qualifications and an interest in research ethics, particularly in health research.



UNIVERSITY OF
LEICESTER

Associate Fellow Profile



Name:

Dr Mark Orme | [Get in touch with Mark](#)

Mark completed an undergraduate degree in Human Biology from Loughborough University in 2013 during which he spent a placement year working at the MRC Epidemiology Unit at the University of Cambridge. Following this he completed his PhD from Loughborough University in 2016 examining the physical activity and sedentary behaviour of people living with chronic obstructive pulmonary disease. Mark started working as a Lecturer at Leicester in 2022, having worked as a post-doctoral researcher for six years. He is an Early Career Research Lead for Respiratory Sciences and a member of the departmental Equality, Diversity and Inclusion Committee. He has several PhD students based in Leicester and around the world, including in Sri Lanka, India and Uganda.

Research Interests:

Physical activity measurement and evaluation in long-term conditions (LTCs) and multiple long-term conditions (MLTCs). Exercise-based rehabilitation, including pulmonary rehabilitation.

Digital health technology-based interventions for LTC/MLTC management and prevention. Global health and UK health inequalities pertaining to above interests.



UNIVERSITY OF
LEICESTER

Associate Fellow Profile



Name:

Dr Emma Palmer | [Get in touch with Emma](#)

Emma is a Reader in Forensic Psychology based in the School of Psychology and Vision Sciences. She has been conducting research in the criminal justice system for over 25 years. Her research falls into two main areas: (1) the design and evaluation of interventions to reduce reoffending and improve offender well-being and (2) physical and mental health of people in prisons and the wider criminal justice system. She has conducted evaluations of interventions for a range of offender groups, including adult and young offenders, male and female offenders, in prison and the community. She is currently leading on an NIHR-funded evaluation of the RECONNECT service, which is a care-after-custody service for adult prison-leavers, that aims to help prison-leavers to engage with community healthcare services in the first 6 months post-release.

Research Interests:

Forensic psychology, development of offending behaviour, and design and evaluation of interventions to reduce reoffending and increase offender well-being. Emma's research examines the development of antisocial behaviour and offending; health well-being and disease in prisons; and interventions to reduce offending. Funders include the NIHR, Ministry of Justice, HM Prison & Probation Service, the Home Office, Health Foundation and the Sentencing Council.



UNIVERSITY OF
LEICESTER

Associate Fellow Profile



Name:

Professor Manish Pareek | [Get in touch with Manish](#)

Manish graduated from the University of Birmingham with Honours in Medicine and undertook general medical training before completing an academic specialist training programme in Infectious Diseases and General Medicine in Leicester and London (Imperial College London) funded by the NIHR and MRC. At present he is Chair and Honorary Consultant in Infectious Diseases at the University of Leicester and University Hospitals of Leicester NHS Trust. He has international expertise in developing and delivering public health research programmes in infectious diseases, migrant health and ethnic minority health. He is applying his research expertise to understanding the risks of COVID-19 in ethnic minorities and other underserved populations.

Research Interests:

The identification and prevention of latent tuberculosis infection in high-risk populations –especially migrants and those with HIV infection. International and national health policy relating to the identification of infectious diseases (especially active and latent tuberculosis) in migrants. Cost-effectiveness of screening migrants for infectious diseases (especially latent tuberculosis infection).



Associate Fellow Profile



Name:

Professor Martin Phillips | [Get in touch with Martin](#)

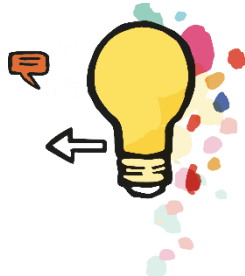
Martin is a Professor of Human Geography and Director of the *Centre for Critical and Creative Geographies* at the University of Leicester. He is also a Challenge Lead on Environmental Justice and Natures of Exclusion in the University's *Institute for Environmental Futures*, as well as Chair of the *Rural Geography Research Group* of the *Royal Geographical Society* and Research Director of *Rural England*. Martin has led and been involved in a series of transdisciplinary research projects, as well as cross-national studies, funded by the AHRC, ESRC, BBSRC, EPSRC and NERC as well as the EU. He is currently a member of the Co-Ordination Team of UKRI's *Landscape Decisions* programme and is involved with research on Net Zero with Leicestershire County Council.

Research Interests:

Martin's research has focused on cultural, social and environmental dimensions of rural change, including media representations of rural people and places, rural gentrification, rural energy geographies, climate change mitigation and adaptation in rural communities, and people's experiential and affective connections to rural natures and landscapes. He has also conducted research on museum geographies and in historical geography, plus written on critical perspectives in human geography, including critical theory, postmodernism and post-structuralism. Much of his research has been transdisciplinary in character, and he has worked with natural and computer scientists, artists, designers, historians, theatre professionals, as well as a range of social scientists. Current research includes studies of perceptions, attitudes and practices associated with climate change and Net Zero, the histories of gentrification, and the social dynamics of rewilding.



Associate Fellow Profile



Name:

Dr Richard Russell | [Get in touch with Richard](#)

Richard is NIHR Academic Clinical Lecturer in Respiratory Medicine based in the Biomedical Research Centre - Respiratory at Glenfield Hospital. He studied medicine at Newcastle University and graduated in 2008. After spells working in North East England and New Zealand, he came to Leicester in 2011 to continue his medical training. He completed his PhD at Leicester University between 2015 and 2020 ('Airway remodelling in response to novel asthma therapies'). He was appointed as an Academic Clinical Lecturer in early 2020 and undertakes research alongside clinical work as a Respiratory Registrar.

Research Interests:

Broadly his primary research interest is in optimising treatment pathways for patients with severe asthma. His current main focus of research is around treatment pathways for patients with asthma and obesity (interdisciplinary with Lifestyle BRC colleagues). He also has interests in bronchial thermoplasty as a treatment for severe asthma, including its mechanisms of action and optimal patient selection, and in ways to minimise the use of oral corticosteroids in severe asthma. Additionally, he has recently undertaken research into ways to reduce the burden of Long Covid, and in the language used by patients and the media to describe Long Covid as a novel medical condition.



UNIVERSITY OF
LEICESTER

Associate Fellow Profile



Name:

Bernard Ryan | [Get in touch with Bernard](#)

Bernard is Professor of Migration Law at the University of Leicester. He is a graduate of University College Dublin and the European University Institute, and was previously Professor of Law at the University of Kent.

He is the lead of the Migration, Mobility and Citizenship Network at the University of Leicester which promotes interdisciplinary research based at the University on all aspects of migration

Research Interests:

His most recent publications and current research cover the following: The history of British nationality law, EU citizenship and migration to Britain, the intersection between migration and employment law, and the British-Irish common travel area.



Associate Fellow Profile



Name:

Professor Teela Sanders | [Get in touch with Teela](#)

Teela is a Professor of Criminology at the University of Leicester currently holding the role of Dean of Research and Enterprise for the College of Social Sciences, Arts and Humanities. She is a leading international scholar in research on the intersections between gender, regulation, governance and crime, specifically in the sex industry. Sanders has written 7 books, edited 10, and has over 60 peer reviewed journal articles, based on research projects funded from major research councils. Teela was PI on the ESRC funded, Beyond the Gaze project, on internet sex work and outcomes have involved practitioners and police good practice, safety resources for sex workers and police and practitioner training. She has received a Leverhulme Research Fellowship for 2019-2021. She is currently working on an ESRC international project: 'Understanding sexual violence in sex working populations: Law, legal consciousness and practice in four countries' and an AHRC grant on the prevention of modern slavery on adult service websites partnered with Unseen, the National Crime Agency and National Police Chiefs Council.

Research Interests:

Crossing criminology, social policy and sociology Teela is interested in working at the intersections of gender, regulation and crime. She works with participatory action research methods and bases her work within communities with clear outcomes for praxis and policy. She is interested in working in East African context and with NGOs and policy makers to support UN sustainability goals, particularly around preventing gender-based violence.



Associate Fellow Profile



Name:

Dr Alice Tilche | [Get in touch with Alice](#)

Alice is a lecturer in Art, Anthropology and Museum Studies. Her research at the intersection of art and activism employs visual, collaborative and arts-based methods to research social transformations. Recent research projects include work on the cultural politics of indigeneity, migration, nationalism, Covid-19 and a series of experimentations with arts-based methodologies. Alice's book [Adivasi Art and Activism: curation in a nationalist age](#) was published with Washington University Press in 2022 and will be re-published with Permanent Black in 2024. Her collaborative [film projects](#) including Sundarana (2011), [Broken Gods](#) (2019) [Budhan-Stories](#) (2021) and [Our Film](#) have been selected for a number of international film festivals and awards. Alice's research has been supported by the Wenner-Gren Foundation, the British Academy, the Leverhulme Trust, the Economic and Social Science Research Council and the Arts and Humanities Research Council UK. Her most recent project is a Research Partnership with Indigenous Researchers titled [Indigenous Film Ecologies in India](#).

Research Interests:

Art, Activism, Arts-Based Research Methodologies, Indigenous art, South Asia, Film, Museums, and Multimodality.



UNIVERSITY OF
LEICESTER

Associate Fellow Profile



Name:

Dr Harvinder Virk | [Get in touch with Harvinder](#)

<https://orcid.org/0000-0002-9739-9593>.

Harvinder is an NIHR Academic Clinical Lecturer in respiratory medicine. He has a PhD in molecular mechanisms of lung fibrosis from the University of Leicester (2021), he is a member of the Royal College of Physicians (UK) and British Thoracic Society. He has an MA (Oxon) in Experimental Psychology from the University of Oxford and graduated in medicine from the University of Birmingham with honours and distinctions in 2010.

Research Interests:

His clinical interest is lung fibrosis, and his research interest is working in interdisciplinary teams to make the pathway from basic research to clinical translation more efficient, with a focus on tools such as antibodies. His current projects include understanding and addressing the drivers of insufficient antibody validation in biomedical research, in collaboration with Dr Eva Krockow (behavioural scientist). Together, he co-leads the Only Good Antibodies community and forum, an Open Science partnership of clinical, behavioural, and fundamental scientists and technicians looking to accelerate discovery and translation, by promoting the use of appropriately validated and selective antibodies in research.



UNIVERSITY OF
LEICESTER

Associate Fellow Profile



Name:

Dr Harry Whitehead | [Get in touch with Harry](#)

Harry is a novelist and Associate Professor of Creative Writing in the School of Arts. He also directs the university's contemporary literatures research centre, [The Centre for New Writing](#), and the annual free literature festival, [Literary Leicester](#). He has been principal editor of the National Association of Writers in Education's peer-reviewed journal *Writing in Practice*, and sat for many years on its Higher Education committee. He has published literary reviews, and short fiction in a variety of contemporary genres, as well as academic papers in the fields of creative writing theory; anthropology & history; memory, nostalgia and identity; Native North American & Canadian history and ethnography; and psychoanalysis.

Research Interests:

Harry's current research is on two fronts: 1) the comparative history of Soviet creative writing programmes in Russia, Germany and Vietnam, partly as a vehicle for more deeply understanding cultural bias in the teaching and theory of Anglophone 'Western' creative writing as an academic subject. This leads to his broader interests in decolonising the subject; 2) climate change, and how the creative writing can aid the dissemination of scientific discourses on the subject.



UNIVERSITY OF
LEICESTER

Associate Fellow Profile



Name:

Professor Mark Williams | [Get in touch with Mark](#)

Mark is Professor of Palaeobiology in the school of Geography, Geology and the Environment. He examines the evolution of life over geological timescales. Over three decades his research has taken him from the tropics to the polar regions, working across terrains as diverse as glaciers, deserts, jungles and everything in between. Mark's current focus is on studying patterns of human induced changes to life, such as the impacts of introduced species into ecosystems as far apart as San Francisco Bay and the Leicestershire countryside. His research explores solutions to human induced changes to the biosphere. Those changes may be one of the defining characteristics of a new geological epoch known as the Anthropocene. His research explores how humans might avoid becoming part of this ignoble group of causes of mass extinction.

Research Interests:

His research focuses on two themes: Understanding the rate and degree of current environmental change from a geological context. Mark is part of an international group of scientists developing the concept of the Anthropocene as an epoch of geological time characterised by humans.

Understanding interactions between the biosphere and the evolution of the Earth System is a mainstay of his research and informs all of his work from the Cambrian to the Anthropocene. At present he is focussed on understanding human impacts on the biosphere.



Associate Fellow Profile

Name:

Dr Anna Davies-Barrett | [Get in touch with Anna](#)

Profile:

[Anna](#) is a Research Associate in Palaeopathology at the School of Archaeology and Ancient History. She is an osteoarchaeologist (trained in the analysis of human remains from archaeological contexts), with a specialism in palaeopathology (the study of disease in archaeological remains). For the past four years she has been working on the [Tobacco, Health and History Project](#), a UKRI-FLF funded research project that investigates changes in disease rates between the seventeenth to nineteenth centuries in Europe and its relationship to the introduction of tobacco in the 1500s.

Previously, Anna worked as a Bioarchaeologist at the British Museum and as a Lecturer in Archaeology at Cardiff University. She is currently also the ECR Representative for the College of Social Sciences, Arts and Humanities at the University of Leicester.

Research Interests:

Environmental and socio-cultural impacts on past diseases; tobacco and health; oral health in the past; inflammatory, infectious, and respiratory disease in the past; post-medieval archaeology and industrialisation; impacts of air quality on past health; microfossil analysis in dental calculus for understanding past diet, occupation, and environment; osteological recording and curation methods for human skeletal remains.



Associate Fellow Profile

Name:

Armand De Filippo | [Get in touch with Armand](#)

Profile:

I have over thirty years' experience in the GLAM sector at national, regional and local levels, most recently as Senior Archivist for the British Motor Industry Heritage Trust and Collections and Engagement Manager for the New Forest Heritage Trust. An Honorary Fellow of the School of Museum Studies, Fellow of the RSA and Chartered Member of the Institute of Information Library Professionals, I am a founder member of the Conference of International Librarians' working group, 'Books and Audiences'. Other memberships include the International Council of Museums and Association for Manuscripts and Archives in Research Collections and the British Art Network research group, 'The Art of Captioning'.

Research Interests:

My research interests include, post-human notions of materiality; the vibrancy of objects and materials, the notion of affect in relation to heritage objects; the role of emotions and imaginations in generating meaning and understanding within interpretive settings; the concept of presence in archives and heritage collections; digital interventions in interpretive spaces and the potentials of advancing digital technologies to enable material, embodied encounters with heritage objects, particularly manuscripts; object biographies; interdisciplinary explorations blending science, the arts and humanities to disrupt conventional practices and enable alternative ways of knowing and inform understandings; social museology; creative public facing projects.



Associate Fellow Profile

Name:

Dr Dennis Gabriel Peple | [Get in touch with Dennis](#)

Profile:

Dr Dennis Peple is an associate professor of HRM data analytics and interpretation and the Director for Education- (Management School) at the University of Leicester School Of Business. He holds a PhD in Business and Management Studies from the University of Huddersfield. He is a member of the Chartered Institute for Personnel and Development (MCIPD), a Senior Fellow of the Higher Education Academy (SFHEA), and a Certified Management and Business Educator (CMBE).

Research Interests:

His research interest is in the following areas: Diversity management, Employee relations, Work psychology, knowledge management, and Student engagement design and practice, with over 15 publications in ABS-ranked journals, including Journal Managerial Psychology, Journal of Business Research, European Management Review, British Education Review Journal, Personnel Review, Employee Relations, Journal of Effectiveness, People and Performance, Public Organisation Review and South African Journal of Information Management. Dr. Peple is the editor of the only CIPD-mapped text addressing HRM's financial and managerial aspects.



Associate Fellow Profile

Name:

Dr Jennifer Creese | [Get in touch with Jennifer](#)

Profile:

Dr Jennifer Creese is a social anthropologist with a focus on healthcare, particularly professional and organisational cultures of healthcare work, health worker migration, and ethnic/minority experiences in health. She holds a PhD in Social Science from The University of Queensland, Australia (2020) specialising in social anthropology and ethnography. She has previously held research positions studying migration experiences, health care resilience, and dementia family care in Australia, and held a postdoctoral fellowship in 2020-21 at the Royal College of Physicians of Ireland, before joining the SAPPHIRE research group in the Department of Population Health Sciences at the University of Leicester in January 2022.

Research Interests:

Jennifer's current and recent research projects involve explorations of wellbeing initiatives for healthcare staff, speak-up for patient safety among ethnic minority healthcare staff, career retention of resident doctors, awareness training for healthcare staff on safe care for individuals with autism and learning disability, Black women's historical narratives of childbirth, and culturally-competent aged care in Jewish communities. She is a 2024/25 Reform Scholar with Reform Thinktank, devising policy recommendations for retention of resident doctors in the NHS. Jennifer also has an interest in Jewish Studies, particularly social sciences and studies of Jewish identity and experience; she is an affiliate of the Stanley Burton Centre for Holocaust and Genocide Studies at the University of Leicester, and editor-in-chief of the Australian Journal of Jewish Studies.



UNIVERSITY OF
LEICESTER

Associate Fellow Profile

Name:

Matt Wilde | [Get in touch with Matt](#)

Profile:

Matt Wilde is an interdisciplinary social scientist with a background in social anthropology. He has conducted fieldwork and managed research projects in Venezuela, Colombia, the UK and the USA. Matt's first monograph, *A Blessing and a Curse: Oil, Politics, and Morality in Bolivarian Venezuela*, was published by Stanford University Press in 2023.

Research Interests:

Energy and natural resources, urban politics and the state, political and moral economies, migration and mobility



Associate Fellow Profile

Name:

Sarah Gunn | [Get in touch with Sarah](#)

Profile:

I am a clinical psychologist and lecturer in clinical psychology, with clinical and research interests in supporting people with long-term conditions (primarily neurodegeneration and brain injury). I have worked with people affected by life-limiting illness since 2012, and I have a significant interest around end of life care and understanding views on assisted dying. As part of my work I supervise a wide range of doctoral research, typically focused on evaluation, intervention and care for people with long-term conditions (especially Huntington's disease). In recent years I have worked in collaboration with the Huntington's Disease Association to co-deliver psychological therapy programmes that I developed for the populations that they support.

Research Interests:

My research interests are primarily related to understanding and supporting people and families affected by physical health conditions, and especially neurological conditions. This includes qualitative work to explore experiences of ill health (for people with a condition, their family members, and caregivers), quantitative work to develop understandings of symptom prevalence and interactions, and development of therapeutic interventions. I'm also involved in a really exciting piece of work with members of the interdisciplinary Deliberate Dying group, where we are seeking to understand current and historical narratives and language in relation to death and dying, and to synthesise new inclusive and accessible language which transcends disciplines and enables better communication in these contexts.



Associate Fellow Profile

Name:

Sarah Knight | [Get in touch with Sarah](#)

Profile:

I am a Professor of Renaissance Literature in the School of Arts, Media and Communication. I teach, translate, edit and write about sixteenth- and seventeenth-century literature, especially English and Latin works. My B.A. is in Classics and English and my M.A. and Ph.D. are in Renaissance Studies. I teach across all years of the English B.A., on the M.A. in English Literature, and I have supervised doctoral research within the disciplines of Classics, English, Modern Languages and Translation Studies. I am a former President of the national Society for Neo-Latin Studies, co-convenor of the British Milton Seminar and a member of the Advisory Council of the Warburg Institute, University of London. I was a British Academy Mid-Career Fellow in 2014, and am a Senior Fellow of the Higher Education Academy (2018), a Fellow of the English Association (2019) and a Fellow of the Society of Antiquaries (2023).

Research Interests:

I am interested in early modern student life across Europe, and in how educational processes imaginatively and intellectually shape literary writing. I usually focus on authors who read and wrote in other languages as well as their own, and this multilingualism has led to interests in translation, cosmopolitanism, and different kinds of cultural exchange and linguistic contact with the wider world. I have edited and translated a number of Latin works, including Leon Battista Alberti's prose satire *Momus* (Harvard University Press) and several accounts of Elizabeth I's travels for the new edition of John Nichols's *Progresses* (5 volumes, Oxford University Press). I have co-edited *The Oxford Handbook of Neo-Latin* and three essay collections on the European contexts of Ramism, the Elizabethan Progresses, and the early modern Inns of Court. I am increasingly interested in how multilingual authors learned about other ancient and contemporary cultures and language groups and how that learning informed their writing. These various interests cohere around my two main current research projects: a new edition and translation of John Milton's student Latin speeches (the *Prolusiones*) and his Latin letters (the *Epistolae Familiares*); and a new edition of Fulke Greville's tragedies *Alaham* and *Mustapha* (both for Oxford University Press).



UNIVERSITY OF
LEICESTER

Associate Fellow Profile

Name:

Dr Lucy Evans | [Get in touch with Lucy](#)

Profile:

I am an Associate Professor in Postcolonial Literature. My current research focuses on literary representations of crime and violence in the Caribbean. My most recent book, [Crime Fiction in the Caribbean: Reframing Crime and Justice](#), was published by Oxford University Press in 2024. From 2021 to 2024 I led an AHRC-funded international project, [Representing gender-based violence: literature, performance and activism in the Anglophone Caribbean](#), working with Caribbean-based researchers and NGO partners to develop strategies for using spoken word poetry and theatre in gender-based violence prevention initiatives. As part of my work on this project, I co-edited an anthology with Shivane Ramlochan, *Unstitching Silence: Fiction and Poetry by Caribbean Writers on Gender-based Violence* (Peekash Press, 2025), and worked with the project team and partners to produce an open-access teaching resource, [GBV Education for Youth: a Caribbean Arts-based Facilitation Guide](#).



UNIVERSITY OF
LEICESTER

Associate Fellow Profile

Name:

Richard Allen | [Get in touch with Richard](#)

Profile:

I am a lecturer in Genetic Epidemiology in the department of Population Health Sciences. My research has focused on understanding the genetics of idiopathic pulmonary fibrosis (i.e. lung scarring) and multi-organ fibrosis. This has mainly been conducted through large statistical genetic analyses known as genome-wide association studies or GWAS, and interdisciplinary functional follow-up analyses. I am lead of the Statistical Methods in Multiple Long-Term Conditions Community of Practice which brings together analysts and statisticians from across the UK investigating multiple long-term conditions and multimorbidity. I am also a Steering Group member of the Centre for Fibrosis Research which promotes interdisciplinary research within the University of Leicester into fibrotic diseases.

Research Interests:

Genetic epidemiology
Statistics
Idiopathic pulmonary fibrosis and other interstitial lung diseases
Multi-organ fibrosis
Multiple long-term conditions



Associate Fellow Profile

Name:

Dr Rachael Wilkinson | [Get in touch with Rachael](#)

Profile:

Rachael is a Senior Postdoctoral Research Associate and is the Protein Lead at the Becky Mayer Centre for Phage Research within the Division of Microbiology and Infection at the University of Leicester. Her research focuses on exploring the phage proteome with a view to improving the mechanistic understanding of phage infections with a view to improve application and exploitation. She has a background in both microbiology and chemical biology and works closely with colleagues in the Department of Chemistry and Molecular and Cellular Biology. She has a degree in Medical Microbiology and Virology from the University of Warwick and a PhD in Chemical Biology from the University of Southampton. She also currently holds the position of Secretary within the Biological Structures Group committee (British Crystallographic Association).

Research Interests:

Rachael's research spans biology, chemistry and medicine. She predominantly uses microbiology, biochemistry and structural biology to explore the phage proteome with a view to unravelling the mechanisms that phage's use to exploit and manipulate their hosts during their lifecycle. Her recent work is particularly focussed on assigning functions to the many "hypothetical" proteins within the phage proteome as well as determining potential therapeutic application of a variety of different phage proteins. Other research interests include: phage engineering, developing new methodology for understanding protein function.



Associate Fellow Profile

Name:

Dr Sian Jenkins | [Get in touch with Sian](#)

Profile:

Sian is an Early Career Fellow in the School of Psychology and Vision Sciences. Her role spans both research and teaching, with a particular focus on health psychology. Within the School of Psychology, Sian teaches and supervises across the undergraduate, Master's and Doctorate of Clinical Psychology programmes.

Alongside her academic position, Sian works in the NHS hypertension outpatient clinic, supporting patients with complex blood pressure management needs. The clinical role grounds Sian's research in real-world healthcare challenges and ensures her work remains clinically relevant and responsive to patient experience.

Research Interests:

Sian's research sits within health psychology, with a focus on behaviour change and psychophysiological interactions that underpin long-term conditions. Current research focuses on medication non-adherence and subsequent patient healthcare engagement, psychological influences on complex presentations such as multiple drug intolerances, and how to appropriately tailor and personalise clinical practice to best support patients.

Methodologically, Sian conducts qualitative research directly with patients to understand their lived experiences and decision-making processes. Overall, her research aims to bridge psychological theory, physiological understanding and clinical care to improve outcomes for people with long-term health conditions.



Associate Fellow Profile

Name:

Dr Yuan Gao | [Get in touch with Yuan](#)

Profile:

Dr Yuan Gao received his PhD in Electrical and Electronic Engineering from the University of Nottingham in 2021. He earned his MSc in Aeronautical Engineering from Beihang University and his Bachelor's degree in Transportation Engineering from Dalian Maritime University.

Since February 2023, he has been a Lecturer (Assistant Professor) in Electrical and Electronic Engineering at the University of Leicester. Previously, he was a Postdoctoral Researcher in hybrid autonomous systems at the University of Bristol.

At Bristol, Dr Gao led a EUROCONTROL project on Point Merge system modelling and simulation using multi-agent systems. In 2020, he contributed to the Clean Sky 2 EMINEO Project, designing DC/AC filters for aircraft electrical power systems. His PhD focused on electric drive system design and control using search-based and machine learning optimisation.

He received the Chinese National Award for Outstanding Students Abroad in 2021. Dr Gao serves as Guest Editor for IEEE Transactions on Power Electronics and Associate Editor for IET Power Electronics, e-Prime, and Electronics and Signal Processing. He is also a reviewer for leading IEEE Transactions journals and has served as Financial Chair of ISEEIE 2024 and Session Chair for IECON 2025, ESARS-ITEC 2024, and AIAA/IEEE EATS 2020.

Research Interests:

Motor drive, power electronics, machine learning and AI, multi-agent modelling and simulation, autonomous systems



UNIVERSITY OF
LEICESTER